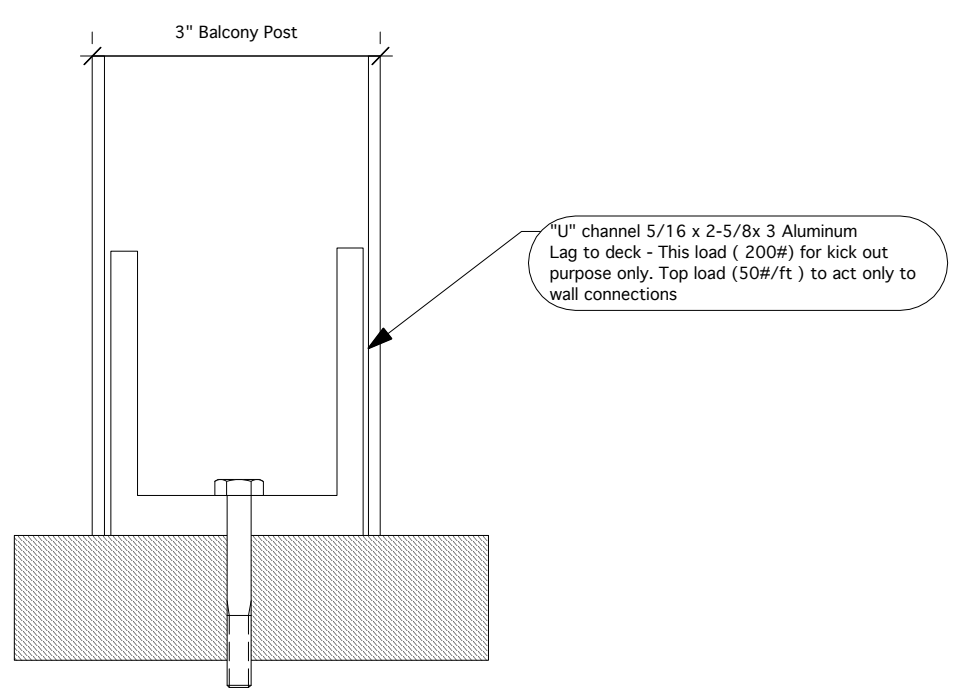
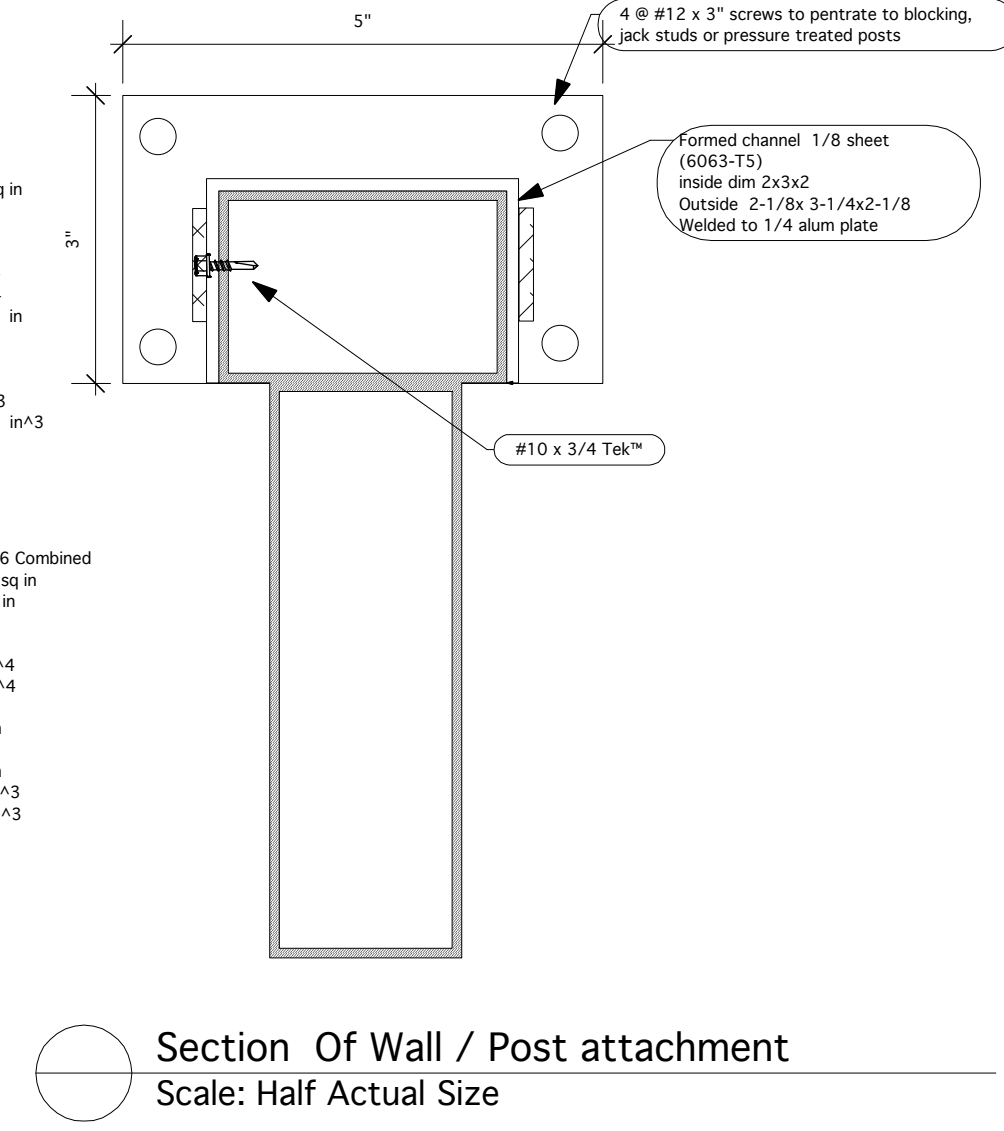
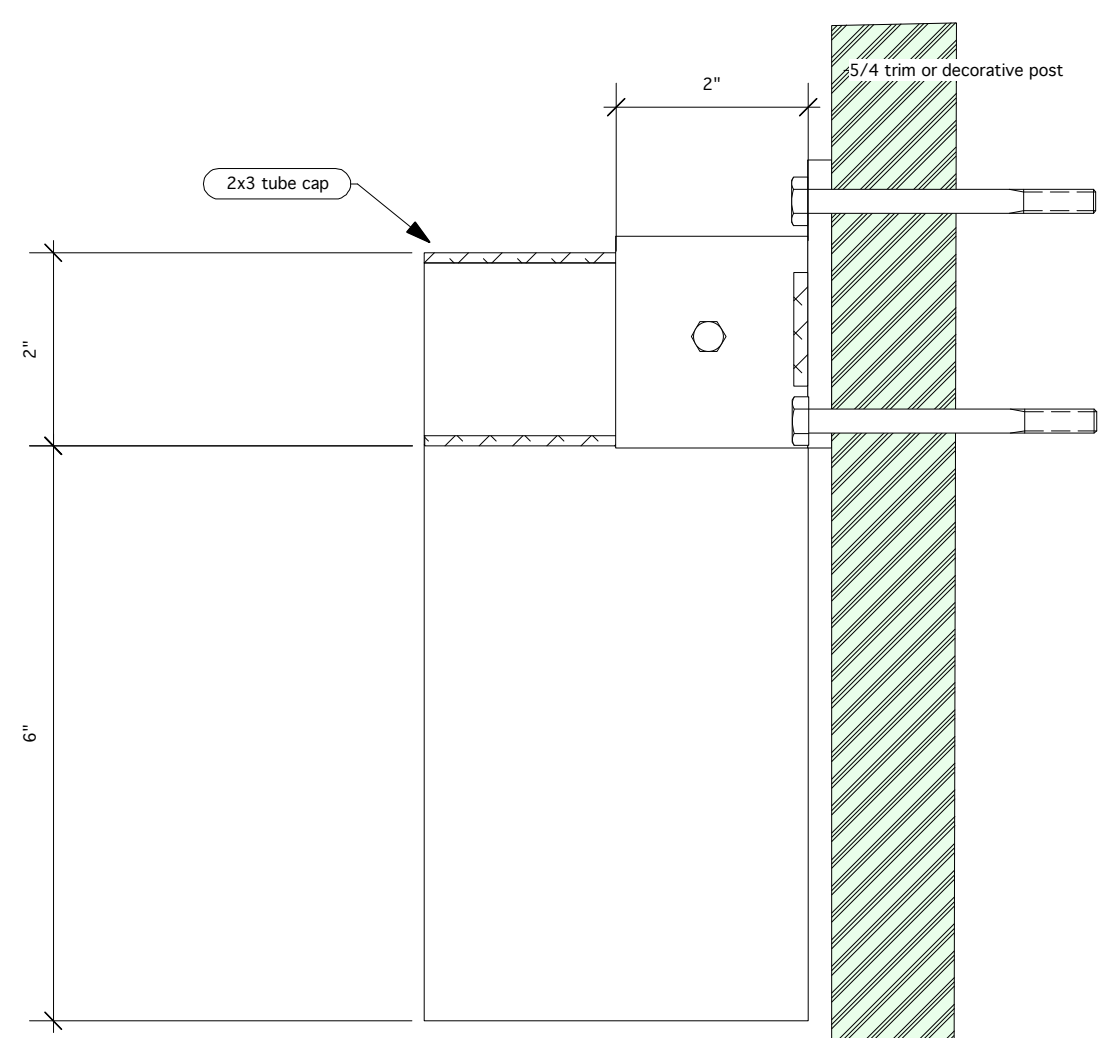
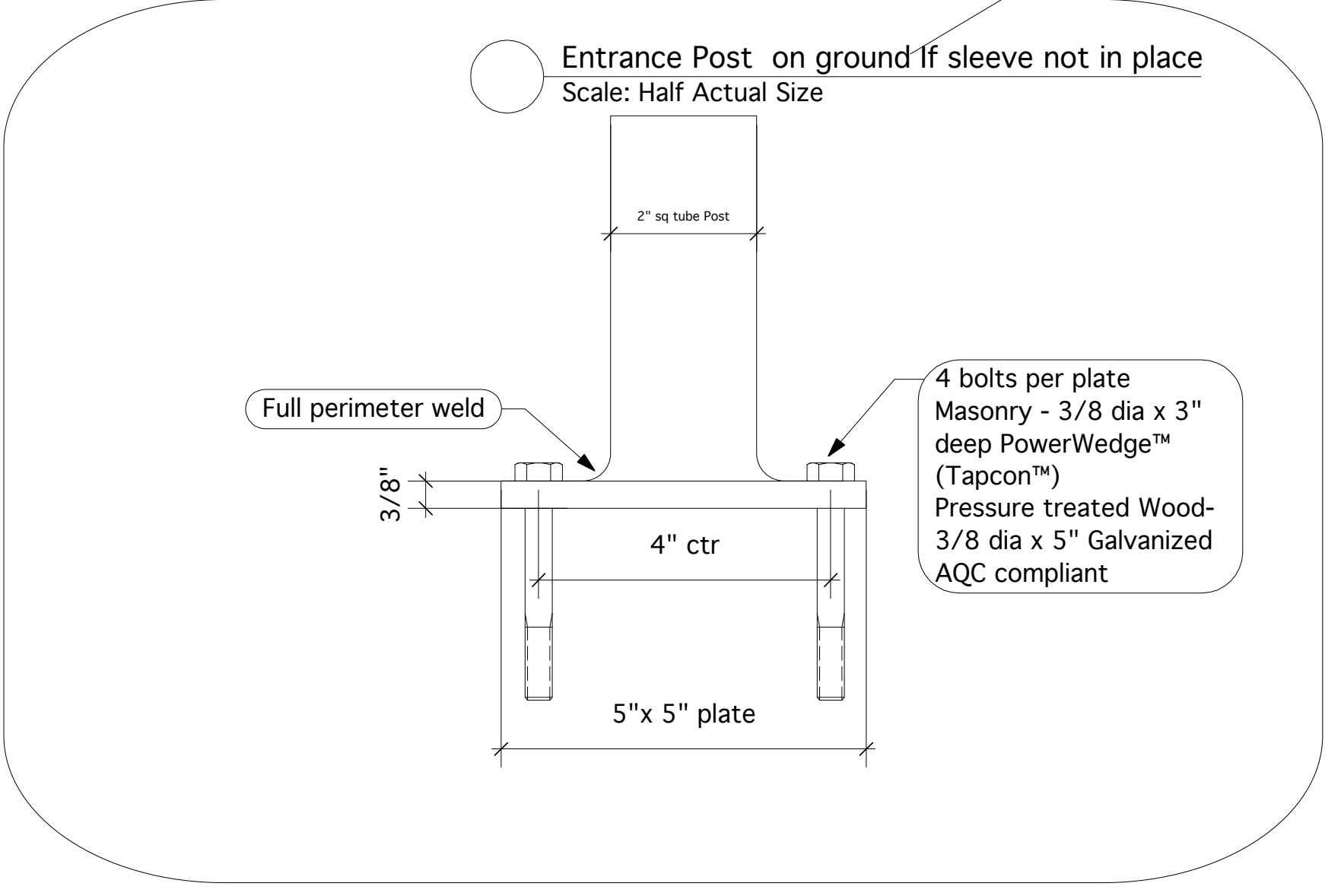
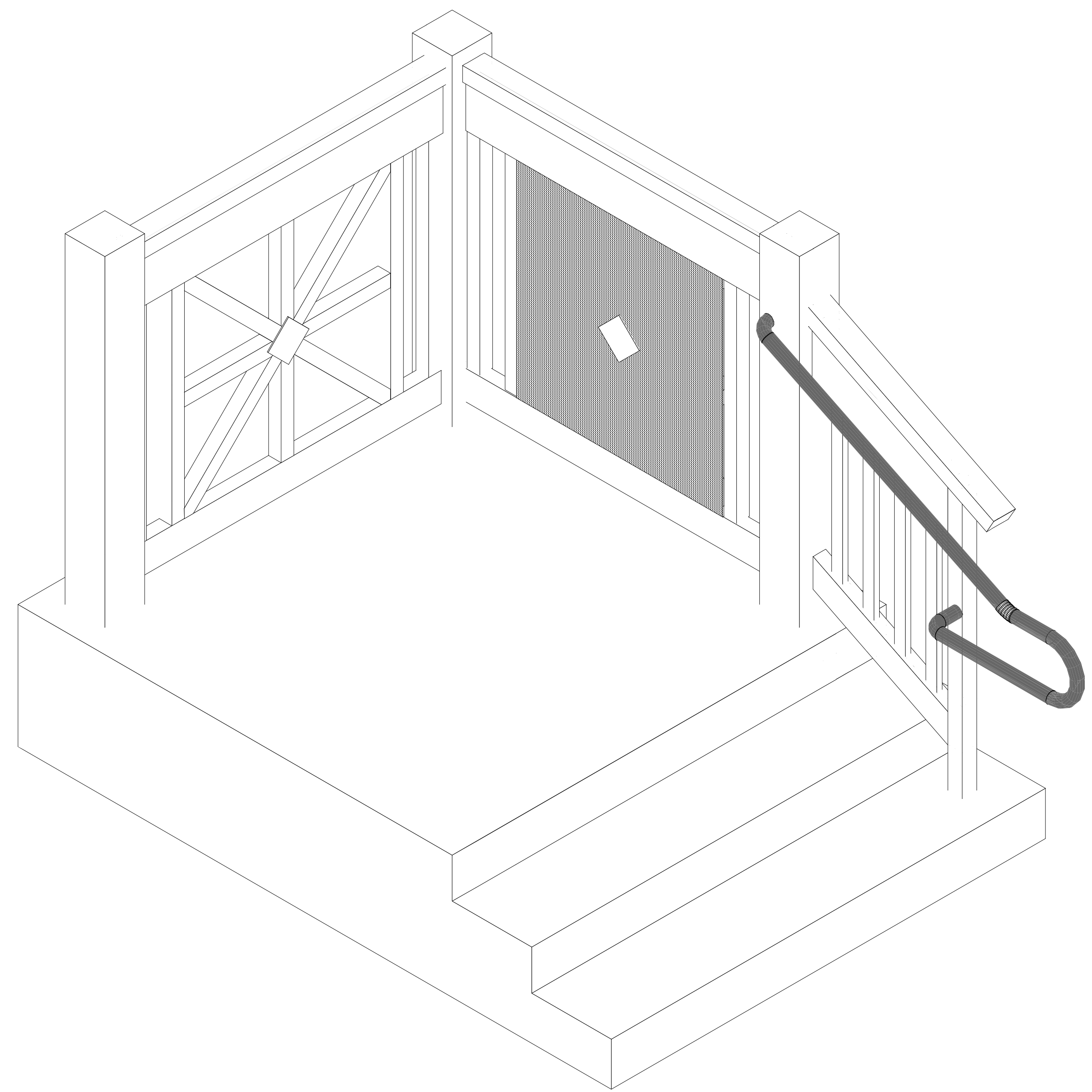
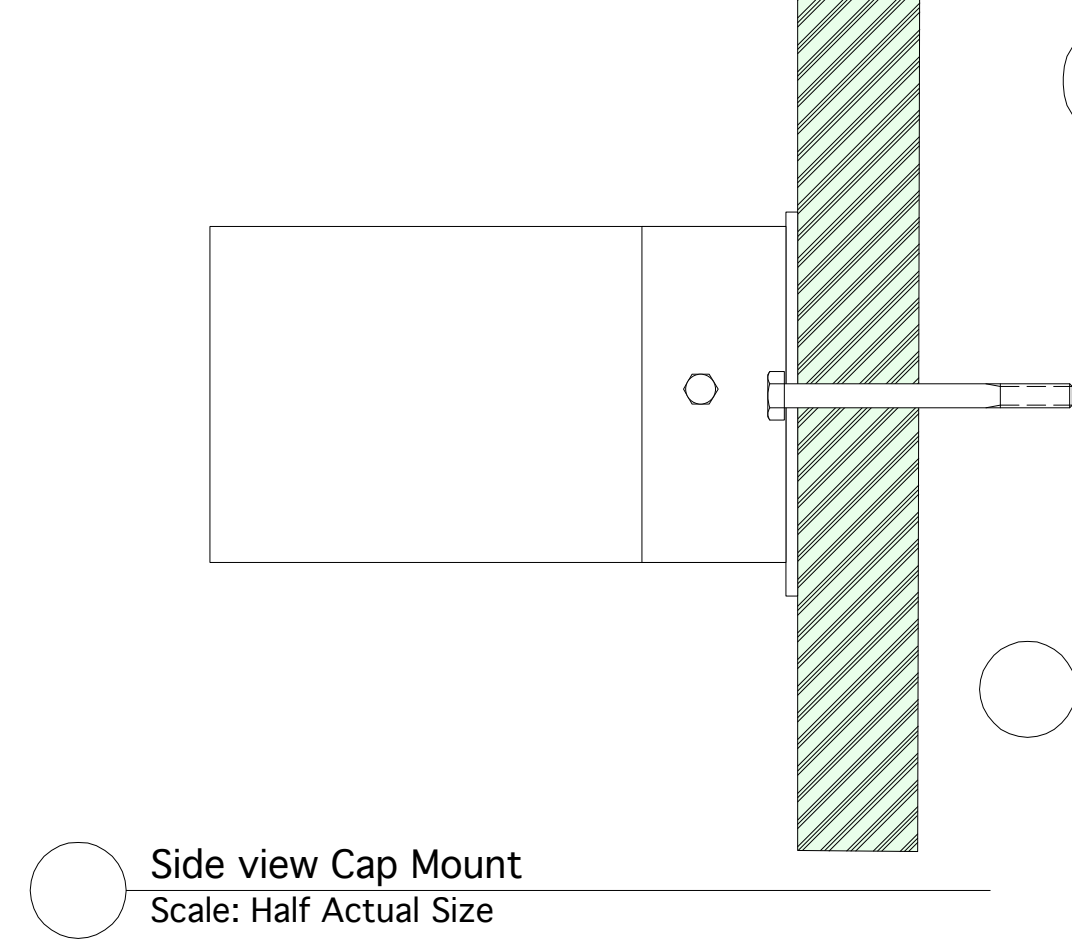


- GENERAL NOTES**
- CONSTRUCTION:** PICKETS ARE WELDED TO TOP AND BOTTOM RAIL MEMBERS AND SNAP COVER. TOP & BOTTOM RAIL MEMBERS WELDED TO POST. MIG WELD. PICKET WELDS ARE HIDDEN FROM VIEW. POST/ BASE PLATE WELDS AND RAIL TO POST WELDS ARE VISIBLE WITH SHARP EDGES REMOVED. CORNERS ARE ACHIEVE VIA CASTING OR NEWELL POSTS DUE TO RESTRICTIONS OF CONVEYORIZED POWDER COATING AND SHIPMENT.
 - FINISH:** RAL TGIC POWDER COAT COLOR GRADACID P4444 (OAKITE)-RINSE - OKEMCOAT 4400. AFTER POWDERING, MATERIAL WILL BE PROTECTED WITH PLASTIC SHEET APPLIED TO HANDRAIL SURFACE.
 - MAINTENANCE:** ALTHOUGH POWDER COATING IS EXTREMELY DURABLE, COSMETIC DAMAGE MAY OCCUR THROUGH HANDLING, INSTALLATION OR OTHER ENVIRONMENTAL CONCERNS DURING CONSTRUCTION AND AFTER. MOST PROBLEMS CAN BE FIXED WITH DETERGENT AND WATER. MILD DISTALLATES SUCH AS ACETONE, KEROSENE, GASOLINE AND MOST OIL AND WATER BASE THINNERS CAN BE USED TO CLEAN STUBBORN STAINS. USE PAINT STRIPPERS OR MEK ONLY AS A LAST RESORT. SHORT EXPOSURE SHOULD NOT HARM THE FINISH. AVOID ABRASIVES, USE OF WHICH WILL DAMAGE THE FINISH BY REDUCING THE THICKNESS OR ELIMINATING IT COMPLETELY. TOUCH UP PAINT SHOULD (OF THE LACQUER OR ACRYLIC ENAMEL VARIETY) WILL ADEQUATELY ADHERE TO THE FINISH. ALL SCREWS, NUTS AND BOLTS SHOULD BE INSPECTED DURING ANY SCHEDULED MAINTENANCE REVIEW. SHAKING THE RAILS TO ASCERTAIN IF RAILING CONNECTIONS ARE LOOSE. LOOSE RAILINGS SHOULD HAVE THE APPROPRIATE FASTENERS RESECURED.
 - MATERIAL:** 6005(6105)/6061 SERIES T5/T6 TEMPER - 4043 WELD WIRE- FASTENERS: TEK™ SCREWS: STALGARD™ SS POP RIVETS USED FOR SECURING RAILING COMPONENTS AS REQUIRED. SPLICING MULTIPLE SECTIONS OF RAIL ACHIEVE BY THE USE OF NEWELL POSTS.



Attachment for all 3" post
Scale: Half Actual Size



Side & Section View of bottom attachment
Scale: Half Actual Size



Manufactured by Hercules Custom Iron
36 W Pennsylvania Ave
Walkersville Md 21793
Voice 301-845-0808
Fax 301-845-0707