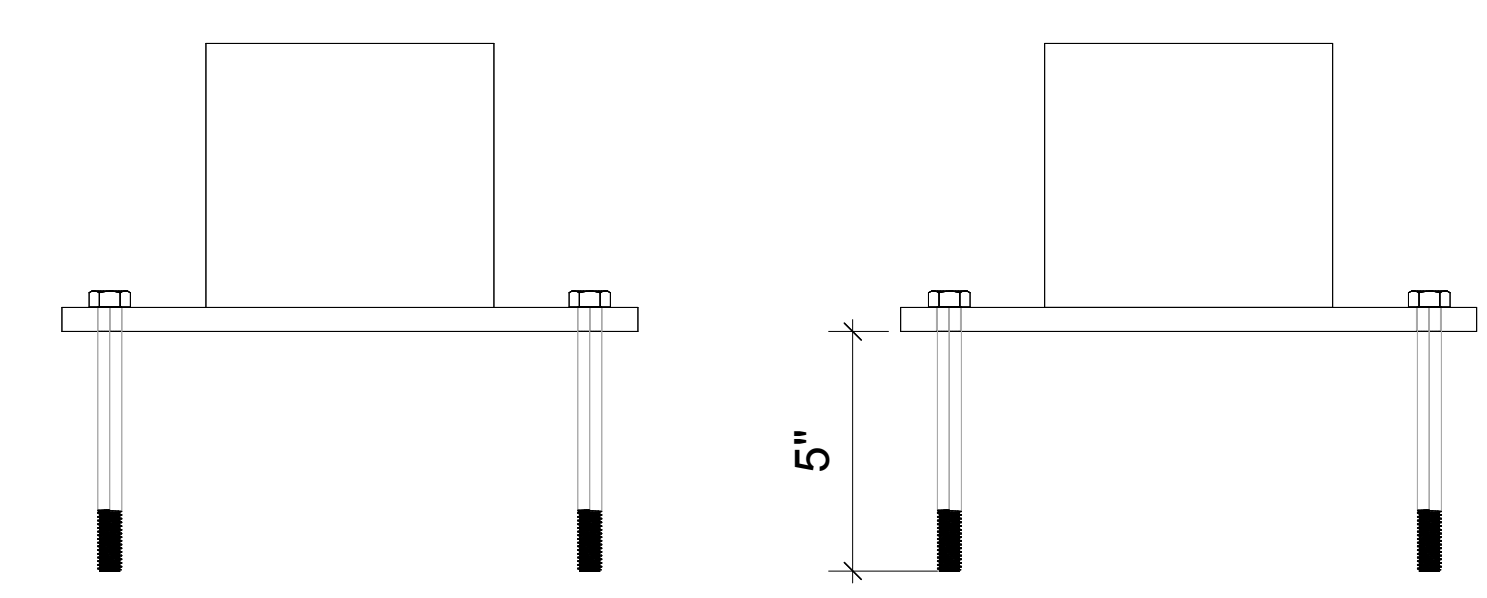
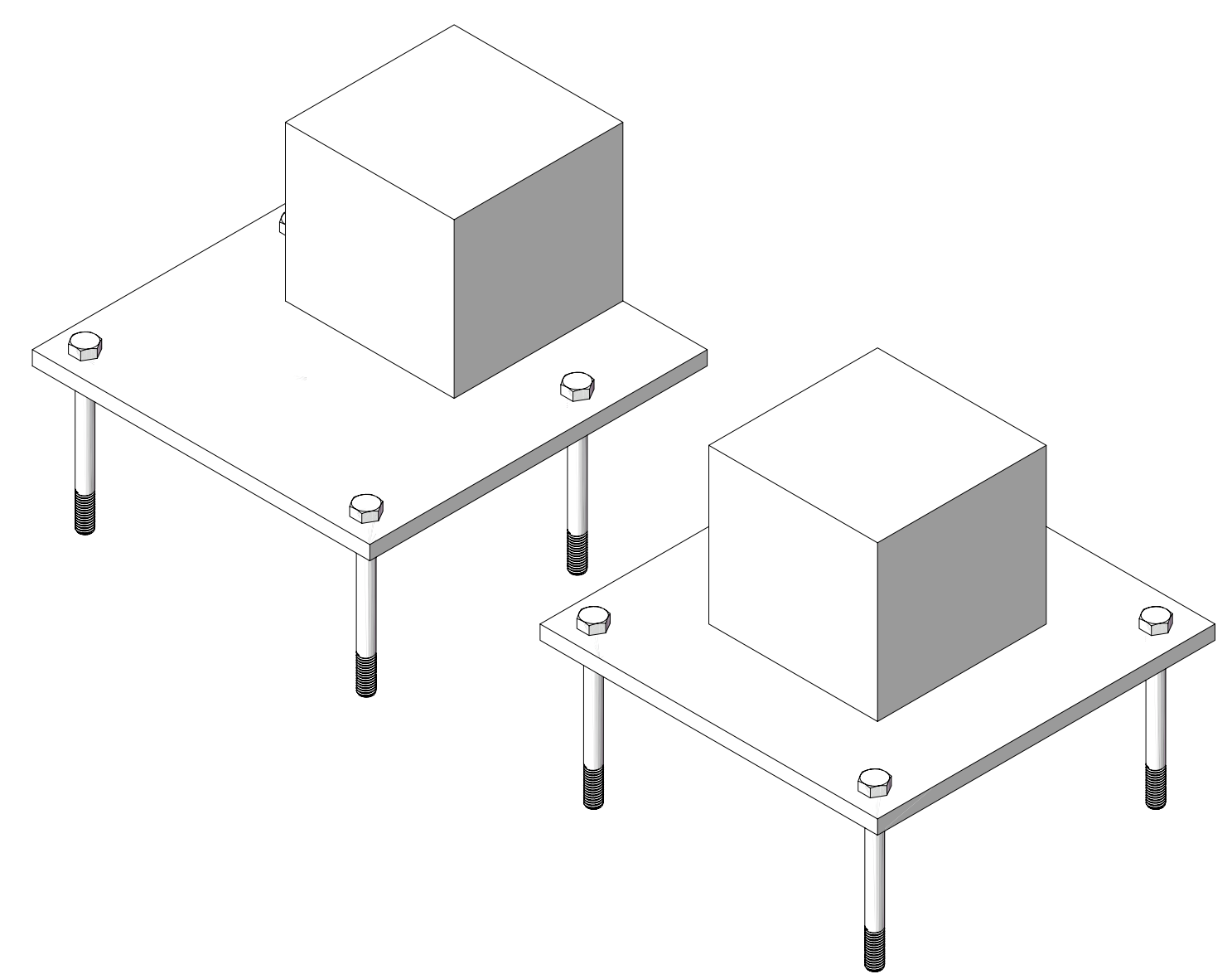
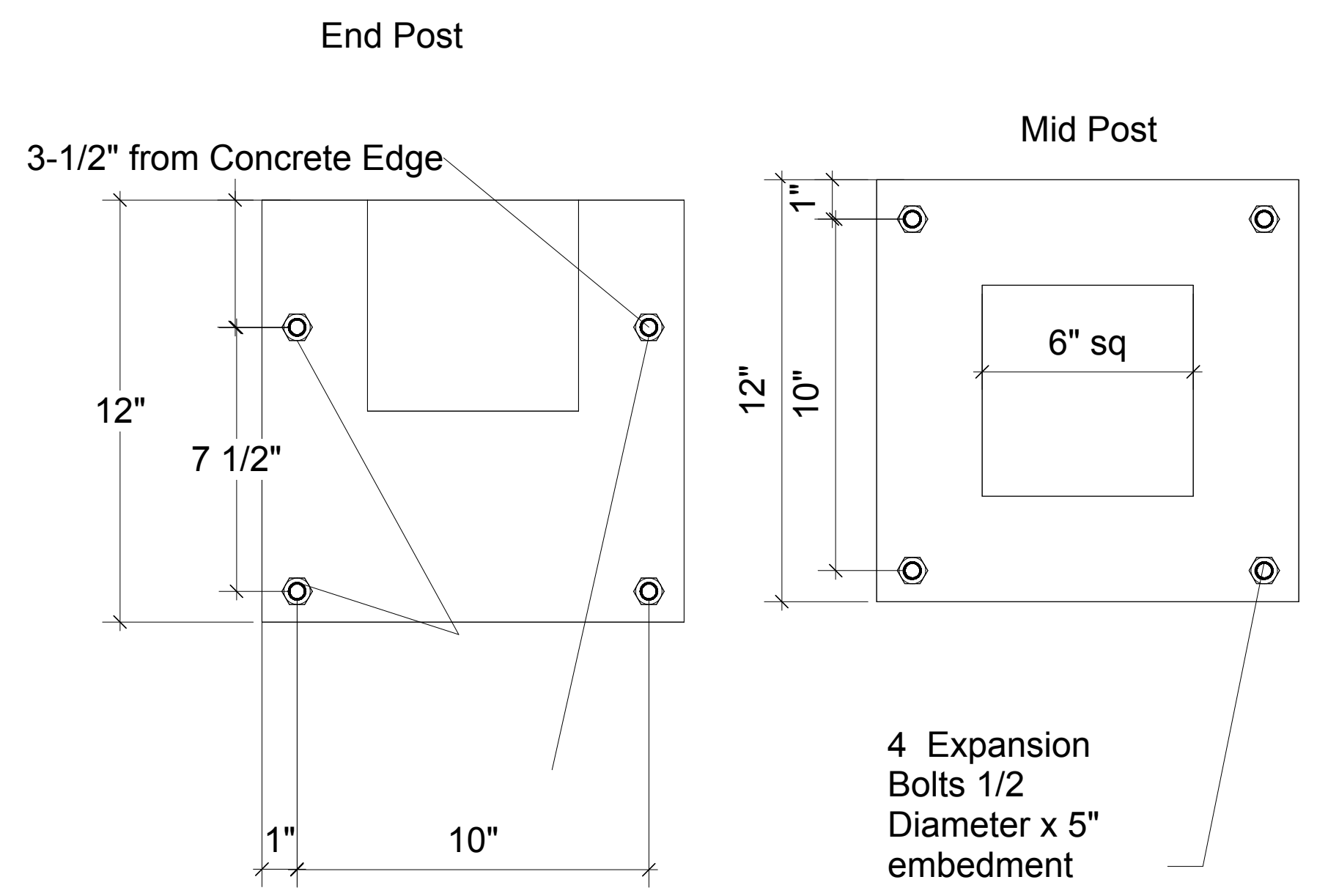


- General Notes**
- Construction:**
Pickets are welded to top and bottom rail members and snap cover. Top & Bottom rail members welded to Vertical frame- Louver blades weld to vertical members. MIG Weld 4043 weld wire
 - Finish:**
Acid Cleaner (Oakite CrysCoat 2147)-Rinse - Gardolene D 6871 -TGIC Polyester Powder unless upgraded. After powdering, material will be protected with Plastic sheet applied to surface.
 - Installation:**
All cuts, hardware and anchor bolts must be touched up by installers not to void warranty/guarantee. All penetrations of powder coating must be touched up by installers prior to completion of installations. General Contractor before receiving warranty will confirm that all gates have been touched up either by installers or GC punchout staff.
 - Maintenance:**
Although powder coating is extremely durable, cosmetic damage may occur through handling, installation or other environmental concerns during construction and after. Most problems can be fixed with detergent and water. Mild distillates such as acetone, kerosine, gasoline and most water base thinners can be used to clean stubborn stains. Use paint strippers or MEK only as a last resort. Short exposure should not harm the finish. Avoid abrasives, use of which will damage the finish by reducing the thickness or eliminating it completely. Touch up paint should (of the lacquer or acrylic enamel variety) adequately adhere to the finish. All scratches, abrasions and hardware items must be touched up with paint. Failure can void any warranty on finish. Note: All strong acids or bases such as CLR™, Concrete cleaners, Ice Melts will damage the railing and coating if not removed immediately. All screws, nuts and bolts should be inspected during any scheduled maintenance review.
 - Materials:**
Unless otherwise specified, all structural members are 6061/6005/6105 high strength alloys. Non structural members 6063. Tempers T5
Fastners are SS Rivets or Stainless Steel self-tapping Tekes™ screws
All other materials that are provided for or used with this product will be corrosion resistant non galvanic reaction materials
When product is in contact with masonry, a minimum of 1 mm of plastic(powder coat), or other material shall be used.



Recommended Hardware
1/2" diameter by 6" Wedge bolt or equal



Manufactured by Hercules Custom Iron
36 W Pennsylvania Ave
Walkersville Md 21793
Voice 301-845-0808
Fax 301-845-0707